

TUTORIAL 5.

COVER AN EXISTING BOX

SUPPLIES

- 1 small square or rectangular box of rigid construction
- Decorative text weight paper (amount to be calculated by the measurement of your box)
- Card stock ($\frac{1}{4}$ " smaller than the inside base of your box)

TOOLS

- Adhesive (good choices: slightly thinned PVA, thinned YES paste and Coccoina, or a glue stick for smaller projects)
- Scissors
- Straightedge (e.g. ruler)

NOTES

- This foolproof formula will result in a professional, finished box cover every time.
- * Use the basic formula and technique for covering any square or rectangular box or rigid set-up box (pre-made boxes from dense cardboard with fixed corners).
- * If you have several same sized boxes,, make a template using these instructions and simply trace it onto each piece of cover paper—saving a lot of time!
- * Corrugated cardboard or collapsible boxes are not generally suitable for this, or any other, box covering project.



STEP 1

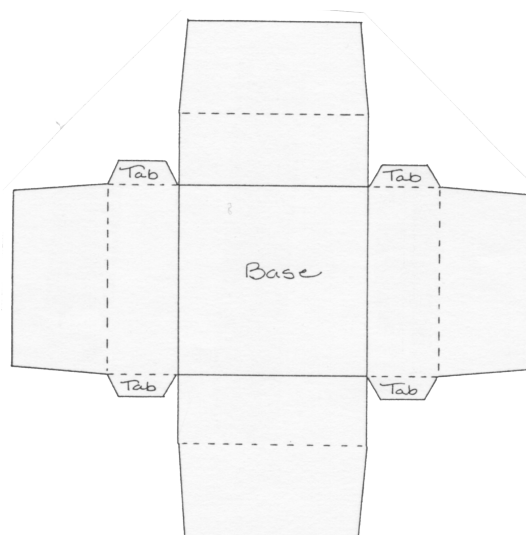
- Use the sample diagram below as you read through the instructions. Dimensions are not added as they will be different for each box, but your cover paper should resemble the diagram before you adhere it to the box.
- To determine the width and length of the paper that you will need, use the following formula. Note: Rise is the measurement of the box base to the box top.

BOX COVER FORMULA

WIDTH + (RISE X 4) + 1"

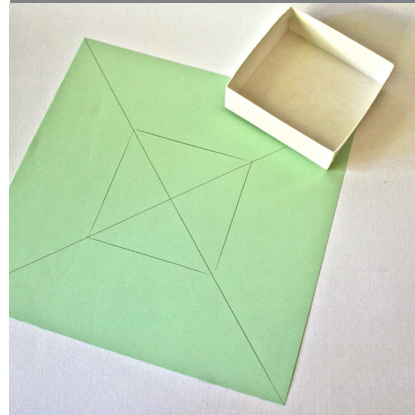
BY

LENGTH + (RISE X 4) + 1



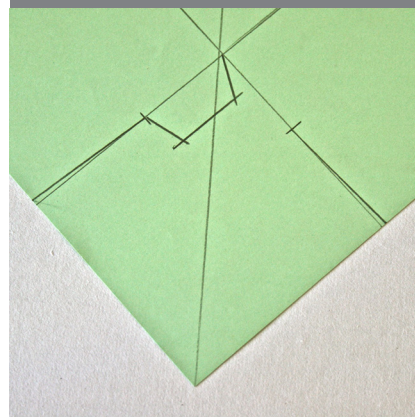
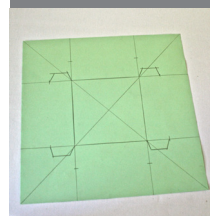
STEP 2

- Center your box on the back/plain side of the paper and trace around the base (you can draw lines, corner to corner, to determine the center since none of the back will be seen when finished).
- Set the box aside, lay a ruler along each of those traced lines and extend each of those lines to the edges of your paper with the pencil.



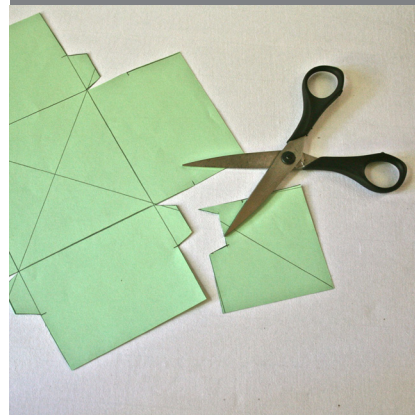
STEP 3

- Measure the rise of your box and make a mark corresponding to that measurement on each of the lines that extend from the base of the box... you will have 8 marks.
- On two opposite side extensions draw tabs as indicated on the diagram and in the photo. Tabs should be approximately $\frac{1}{2}$ " deep, as wide as the rise and tapered at the sides.
- Don't worry if the tabs are not accurate because they will not be visible on the finished box.



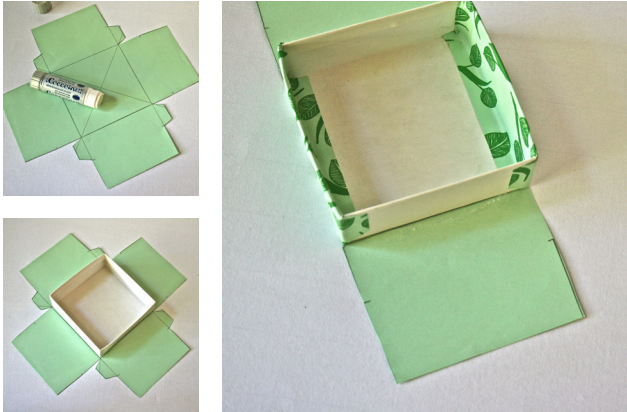
STEP 4

- Taper each of the arms slightly (about $\frac{1}{8}$ ") as indicated on the diagram.
- This step is a bit tricky so if you get hung up here just ignore it and move on – it creates a slightly better fit on the inside but will not make any difference in appearance on the outside of the box.
- Using scissors, or a straight edge and craft knife, cut out the corners of the decorative paper so that your sheet resembles the diagram.



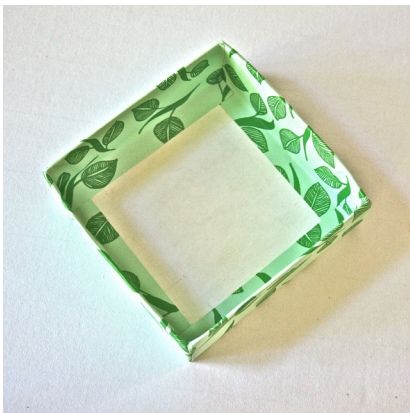
STEP 5

- Apply a low moisture adhesive, with a brush if needed, to the entire backside of the paper and carefully center your box on the original trace marks.
- Fold the two extensions with the tabs up and over the top edge of the box (snugly). Smooth out the paper, inside and out, including the little 1/2" flap that extend onto the base of the box.



STEP 6

- Fold the tabs over (snugly) to the uncovered sides of the box and smooth.
- Fold the remaining two extensions up and over the top edges of the box, covering the tabs, and smooth.
- Apply adhesive to the back side of the card stock and adhere to the inside base, covering the interior flaps of decorative paper.
- Done!



HELPFUL HINTS

- * Nearly any problem with this formula can be traced back to inaccurate measurements. Being precise is very important.
- * Using a low moisture adhesive will give the best results as moisture = wrinkled paper. You won't want anything that dries too quickly either, since you need a little time to position everything properly. Avoid rubber cement or paper cement. Proceed with caution.
- * Once you master this technique you will never look at rigid boxes the same way again. I leave holiday gatherings with a couple of presents and loads of (everyone's) boxes.
- * Follow TUTORIAL #6 CREATE A CUSTOM LID to finish this covered box with a beautiful covered lid.

